

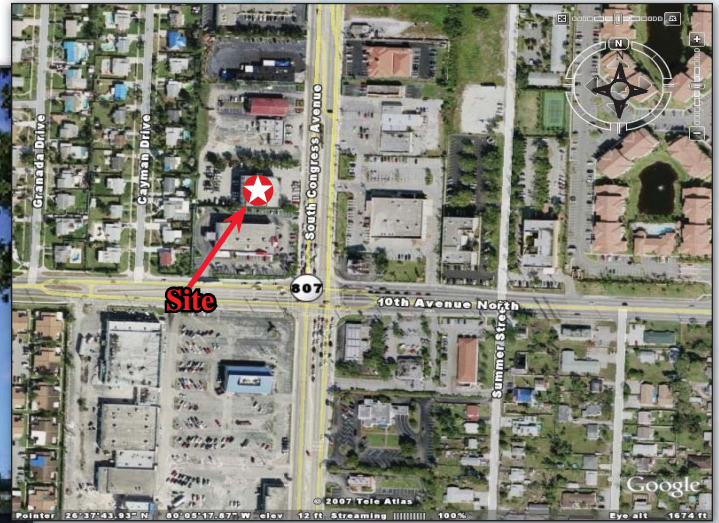


**Prudential**

**CRES Commercial  
Real Estate SFL**

# CONGRESS PROFESSIONAL CENTER

## FEATURED FOR LEASE



3175 N Congress Avenue  
Palm Springs, FL 33461

- Three Story office building with open atrium
- 599 SF - 1,846 SF Available
- Situated on one acre
- Ample parking
- Minutes to I-95
- **Very Aggressive Rates**

**Rick Pribell**  
**561-353-0646**

**Rpribell@prudentialcressfl.com**

### We Know.

**Prudential CRES Commercial  
Real Estate SFL**  
5301 N Federal Hwy, Ste 150  
Boca Raton, FL 33487  
tel. 561-995-8887  
fax. 561-995-7151  
[www.prudentialcressfl.com](http://www.prudentialcressfl.com)

*Offices throughout South Florida*

This information is believed to be accurate. We are not responsible for misstatements of facts, errors or omissions, prior sale, change of price or withdrawal from the market without notice. © 2006, Prudential Financial. Prudential Real Estate brokerage services are offered through the independently owned and operated network of broker member franchisees of The Prudential Real Estate Affiliates, Inc., a Prudential Financial company. Prudential is a registered trademark of The Prudential Insurance Company of America. The information above has been obtained from sources believed reliable. While we do not doubt its accuracy we have not verified it and make no guarantee, warranty or representation about it. It is your responsibility to independently confirm its accuracy and completeness. Any projections, opinions, assumptions, or estimates used are for example only and do not represent the current or future performance of the property. The value of this transaction to you depends on tax and other factors which should be evaluated by your tax, financial and legal advisors. You and your advisors should conduct a careful, independent investigation of the property to determine to your satisfaction the suitability of the property for your needs.